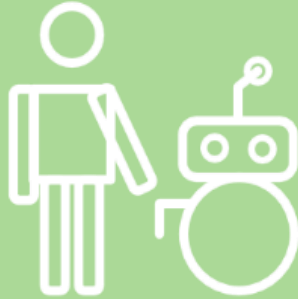


Monitoring Different Aspects of Human Behavior in the Shop- Floor

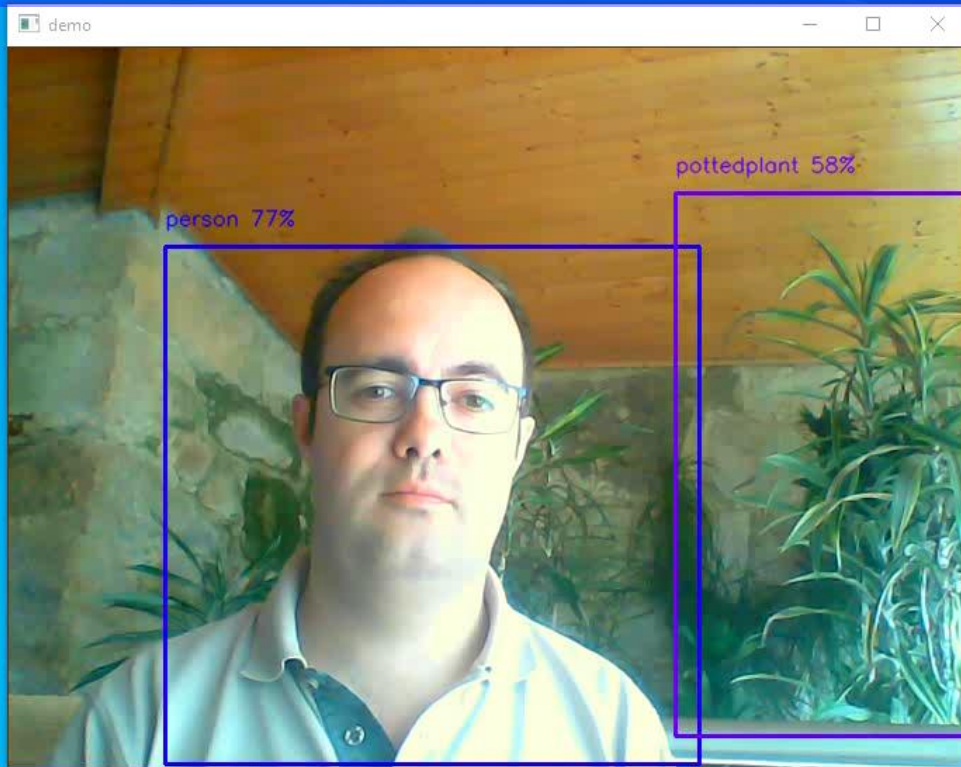
CF#1 Webinar, April 28th 2021
Jorge Oliveira, Researcher
ISEP

Demo:

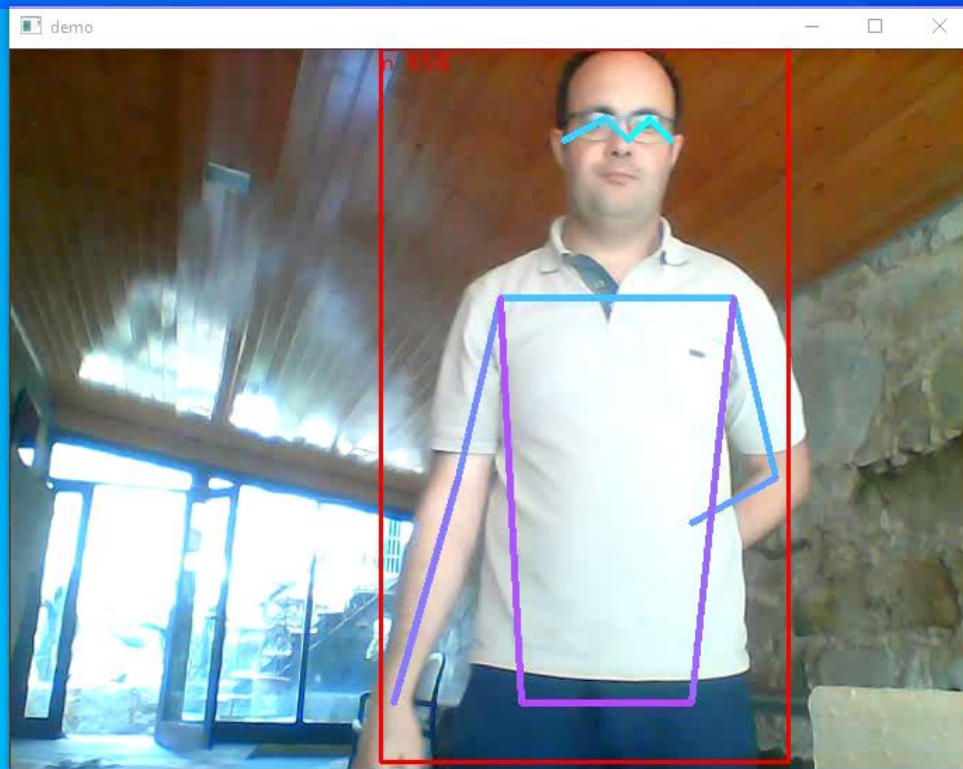
Monitoring Different Aspects of Human Behavior in the Shop-Floor



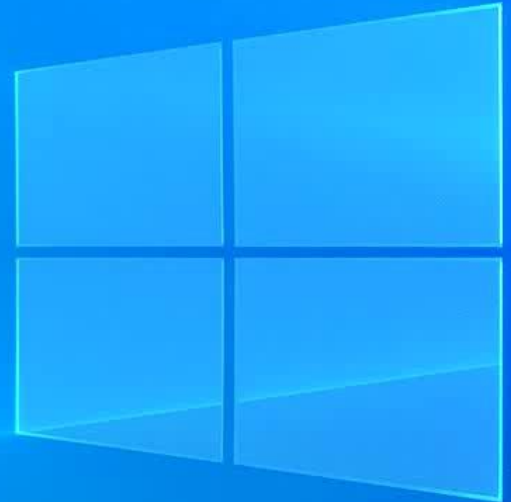
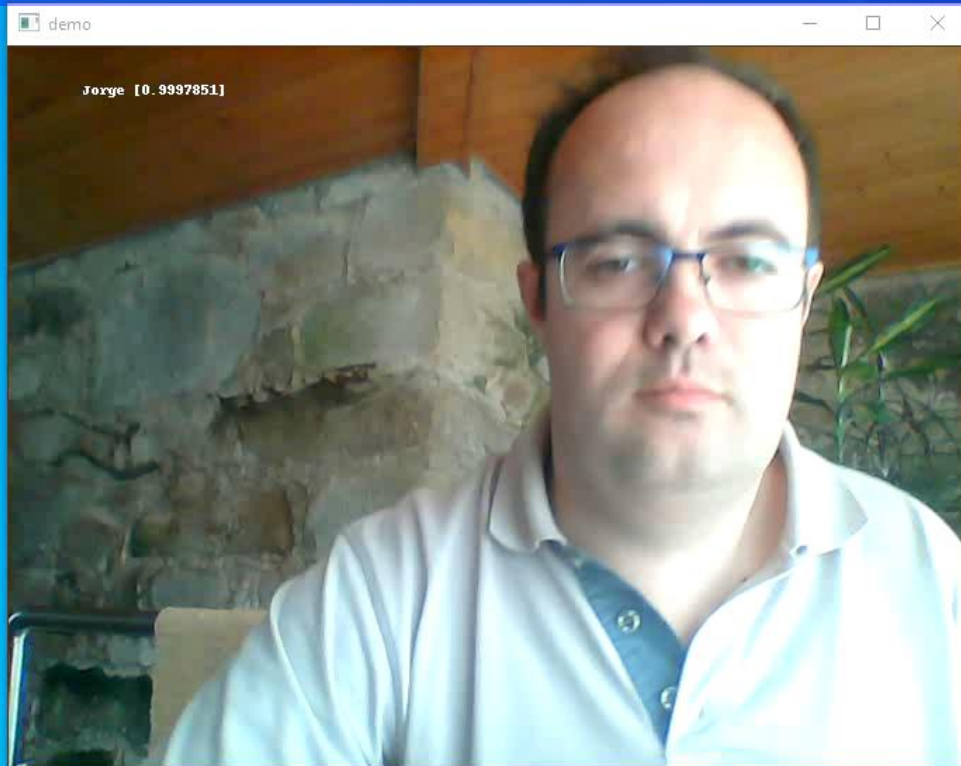
Object Detection



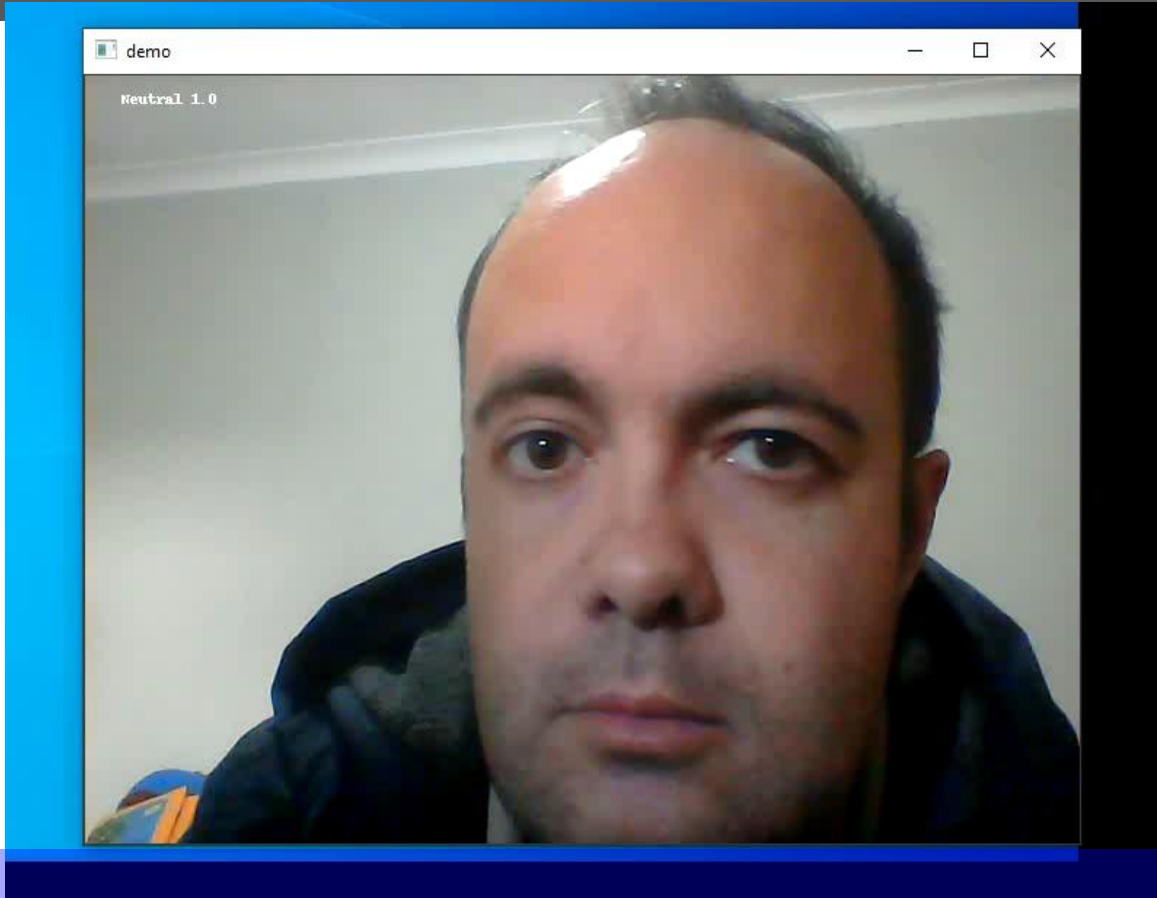
Pose Detection

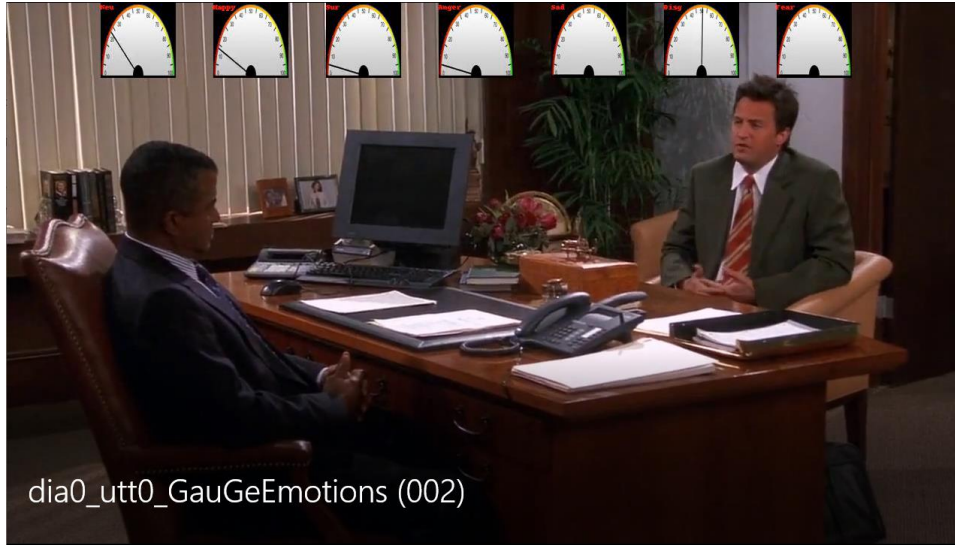


Human Recognition



Human Emotion Recognition

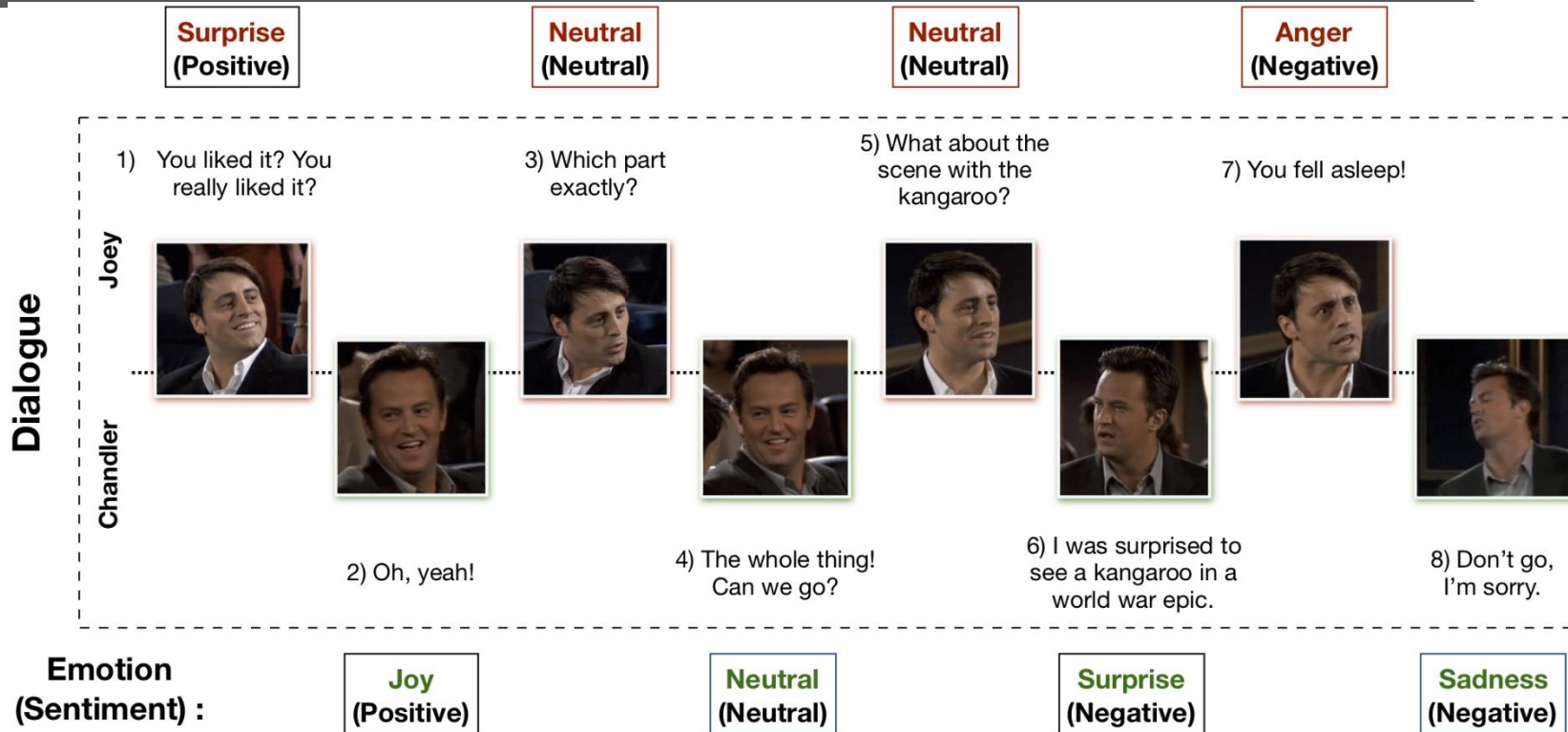




dia0_utt0_GauGeEmotions (002)

A screenshot of our system. The algorithm analyzes the speech of each subject, and outputs the likelihood of each emotion been manifested [1].

Multi-Modal Emotion Recognition System.



An example of dialogue from the TV-show Friends (Figure adapted from [2])

THANK YOU !!!

Contact: jho@isep.ipp.pt